

# REIT Statistics - Rentals

RICHMOND



## Statistical Information - 2018

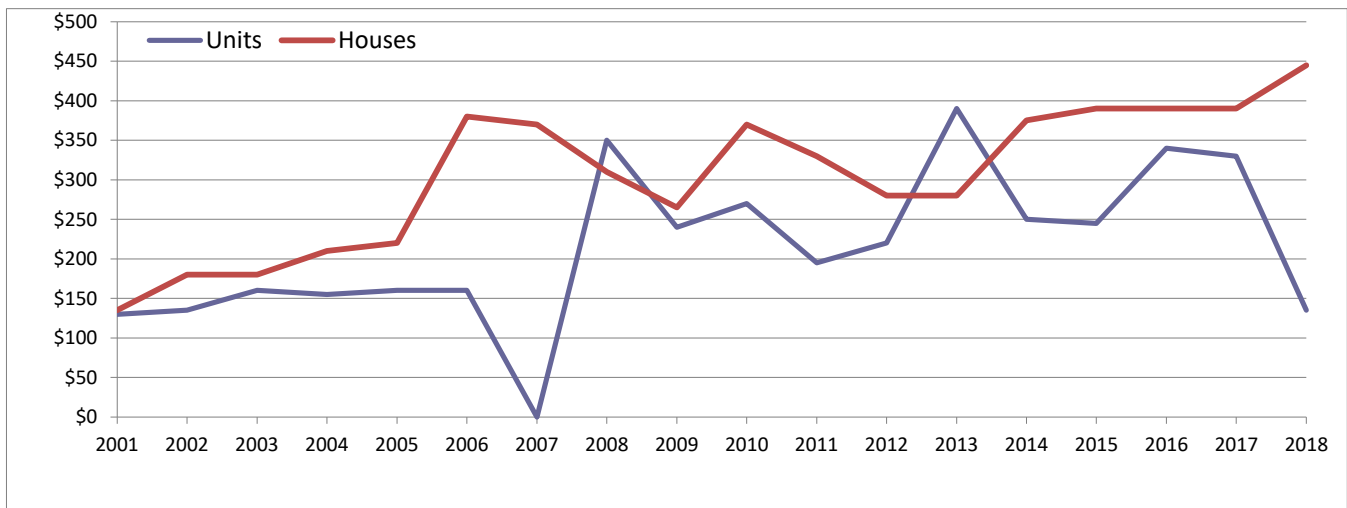
	Units	Houses	% Change (\$)	Units	Houses
<b>Rentals</b>	1	12	last year:	-59.1%	14.1%
<b>Median:</b>	\$135	\$445	2 years prior:	-60.3%	14.1%
			5 years prior:	-65.4%	58.9%
			10 years prior:	-61.4%	43.5%

Year	Units			Houses	
	Rentals	Median Rent		Rentals	Median Rent
2001	3	\$130		3	\$135
2002	3	\$135		11	\$180
2003	1	\$160		11	\$180
2004	2	\$155		10	\$210
2004	3	\$160		2	\$220
2006	1	\$160		1	\$380
2007	0	NA		2	\$370
2008	2	\$350		6	\$310
2009	3	\$240		6	\$265
2010	1	\$270		4	\$370
2011	4	\$195		4	\$330
2012	3	\$220		5	\$280
2013	5	\$390		11	\$280
2014	5	\$250		10	\$375
2015	8	\$245		16	\$390
2016	4	\$340		10	\$390
2017	4	\$330		12	\$390
2018	1	\$135		12	\$445

Note: 2018 includes 01/01/18 to 31/08/18

## RICHMOND

### Rental Movement



While REIT has full confidence in its figures, no warranty, no guarantee, or holding out, either expressed or implied is given and persons or companies who pursue financial investment or otherwise who act on the basis of this data do so at their own risk.

# REIT Statistics - Rentals

RICHMOND



## Statistical Information - 2018

	Units	Houses	% Change (\$)	Units	Houses
			last year:	NA	0.0%
2 bed	NA	\$430	2 years prior:	NA	7.5%
3 bed	NA	\$525	5 years prior:	NA	28.4%
			10 years prior:	NA	43.3%

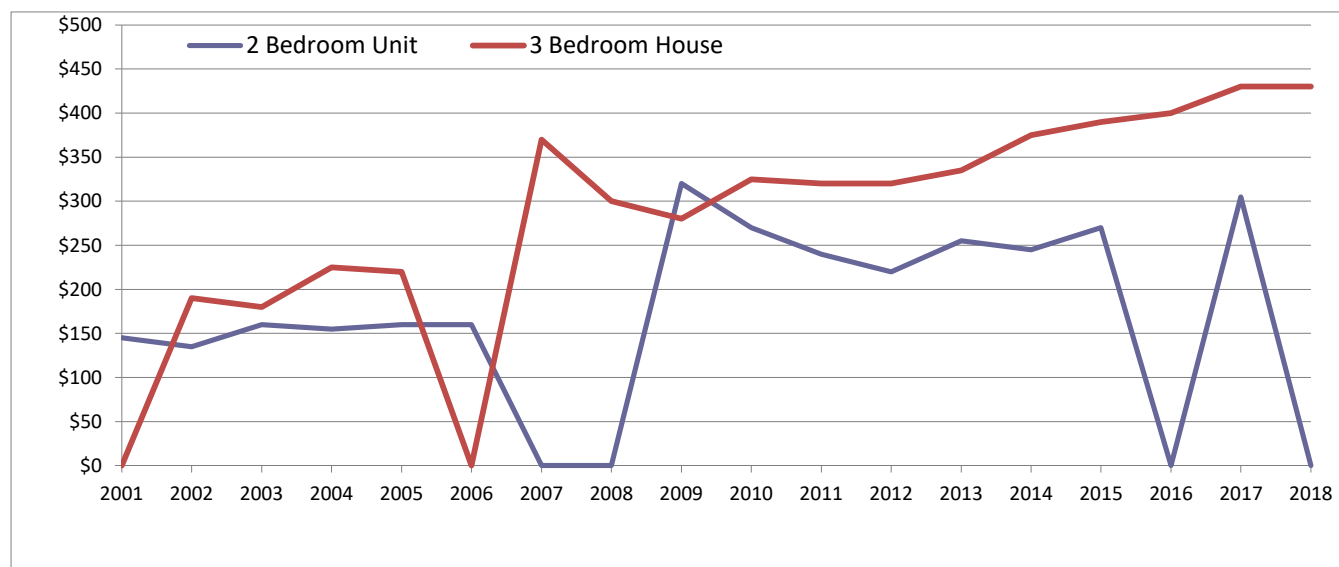
Year	Units		
	1 Bed	2 Bed	3 Bed
2001	\$95	\$145	NA
2002	NA	\$135	NA
2003	NA	\$160	NA
2004	NA	\$155	NA
2004	NA	\$160	NA
2006	NA	\$160	NA
2007	NA	NA	NA
2008	NA	NA	\$350
2009	NA	\$320	\$235
2010	NA	\$270	NA
2011	\$150	\$240	\$255
2012	\$150	\$220	NA
2013	\$150	\$255	NA
2014	NA	\$245	\$300
2015	\$145	\$270	NA
2016	\$135	NA	\$340
2017	NA	\$305	\$380
2018	\$135	NA	NA

Houses		
2 Bed	3 Bed	4 Bed
\$135	NA	NA
\$145	\$190	\$200
\$165	\$180	\$200
\$180	\$225	\$190
NA	\$220	NA
NA	NA	\$380
NA	\$370	NA
NA	\$300	\$320
\$255	\$280	\$225
NA	\$325	\$420
NA	\$320	\$340
\$265	\$320	NA
\$280	\$335	NA
\$95	\$375	\$490
\$230	\$390	\$490
\$330	\$400	NA
\$350	\$430	NA
\$495	\$430	\$525

Note: 2018 includes 01/01/18 to 31/08/18

## RICHMOND

### Rental Movement



While REIT has full confidence in its figures, no warranty, no guarantee, or holding out, either expressed or implied is given and persons or companies who pursue financial investment or otherwise who act on the basis of this data do so at their own risk.

Prepared by Research 5/10/2018