

# REIT Statistics - Rentals

LINDISFARNE



## Statistical Information - 2018

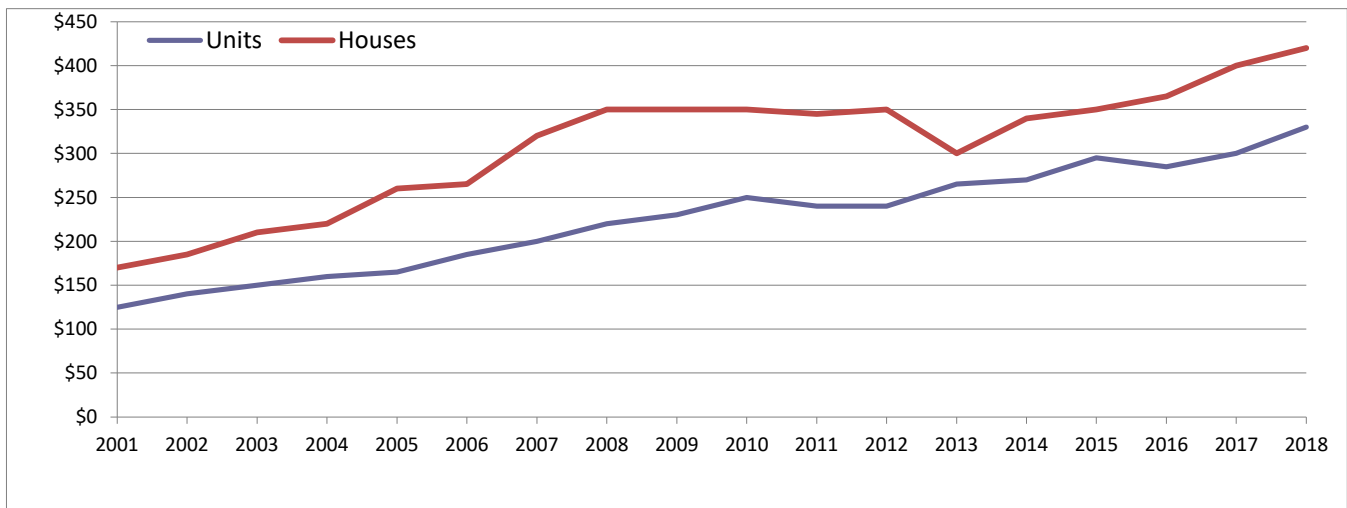
	Units	Houses	% Change (\$)	Units	Houses
<b>Rentals</b>	49	70	last year:	10.0%	5.0%
<b>Median:</b>	\$330	\$420	2 years prior:	15.8%	15.1%
			5 years prior:	24.5%	40.0%
			10 years prior:	50.0%	20.0%

Year	Units			Houses	
	Rentals	Median Rent		Rentals	Median Rent
2001	43	\$125		47	\$170
2002	58	\$140		48	\$185
2003	40	\$150		42	\$210
2004	42	\$160		55	\$220
2004	27	\$165		40	\$260
2006	26	\$185		32	\$265
2007	20	\$200		68	\$320
2008	21	\$220		28	\$350
2009	26	\$230		19	\$350
2010	9	\$250		15	\$350
2011	20	\$240		22	\$345
2012	16	\$240		21	\$350
2013	24	\$265		40	\$300
2014	68	\$270		97	\$340
2015	76	\$295		91	\$350
2016	76	\$285		95	\$365
2017	70	\$300		89	\$400
2018	49	\$330		70	\$420

Note: 2018 includes 01/01/18 to 31/08/18

## LINDISFARNE

### Rental Movement



While REIT has full confidence in its figures, no warranty, no guarantee, or holding out, either expressed or implied is given and persons or companies who pursue financial investment or otherwise who act on the basis of this data do so at their own risk.

Prepared by Research 5/10/2018

# REIT Statistics - Rentals

LINDISFARNE



## Statistical Information - 2018

	Units	Houses	% Change (\$)	Units	Houses
			last year:	16.1%	3.7%
2 bed	\$325	\$420	2 years prior:	12.1%	15.1%
3 bed	\$395	\$495	5 years prior:	22.6%	40.0%
			10 years prior:	47.7%	20.0%

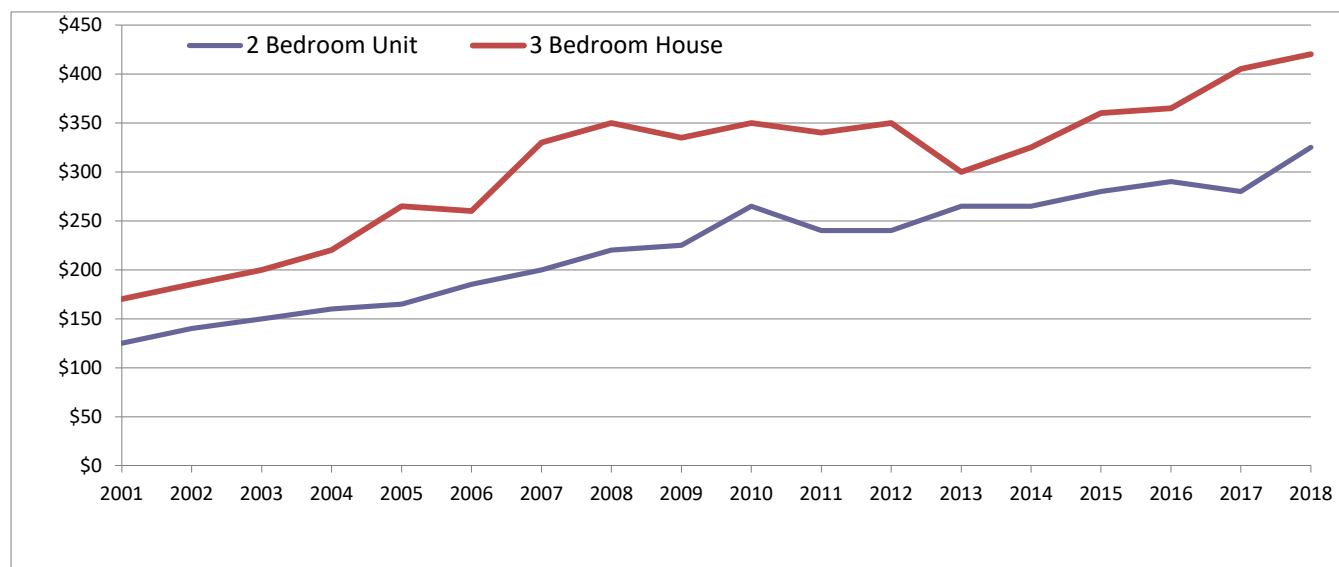
Year	Units		
	1 Bed	2 Bed	3 Bed
2001	\$80	\$125	\$125
2002	\$85	\$140	\$175
2003	\$110	\$150	\$165
2004	\$120	\$160	\$200
2004	\$130	\$165	NA
2006	\$130	\$185	\$350
2007	NA	\$200	\$250
2008	\$165	\$220	\$375
2009	\$170	\$225	\$285
2010	\$210	\$265	\$410
2011	\$195	\$240	\$320
2012	\$210	\$240	\$450
2013	\$200	\$265	\$480
2014	\$185	\$265	\$385
2015	\$200	\$280	\$380
2016	\$210	\$290	\$355
2017	\$225	\$280	\$380
2018	\$250	\$325	\$395

Houses		
2 Bed	3 Bed	4 Bed
\$120	\$170	\$195
\$160	\$185	\$250
\$190	\$200	\$240
\$175	\$220	\$265
\$200	\$265	\$270
\$250	\$260	\$280
\$250	\$330	\$330
\$320	\$350	\$375
\$310	\$335	\$360
NA	\$350	\$380
\$300	\$340	\$390
\$280	\$350	\$400
\$290	\$300	\$385
\$285	\$325	\$365
\$310	\$360	\$380
\$340	\$365	\$480
\$360	\$405	\$440
\$395	\$420	\$495

Note: 2018 includes 01/01/18 to 31/08/18

## LINDISFARNE

### Rental Movement



While REIT has full confidence in its figures, no warranty, no guarantee, or holding out, either expressed or implied is given and persons or companies who perseue financial investment or otherwise who act on the basis of this data do so at their own risk.

Prepared by Research 5/10/2018