

REIT Statistics - Rentals

HOWRAH



Statistical Information - 2018

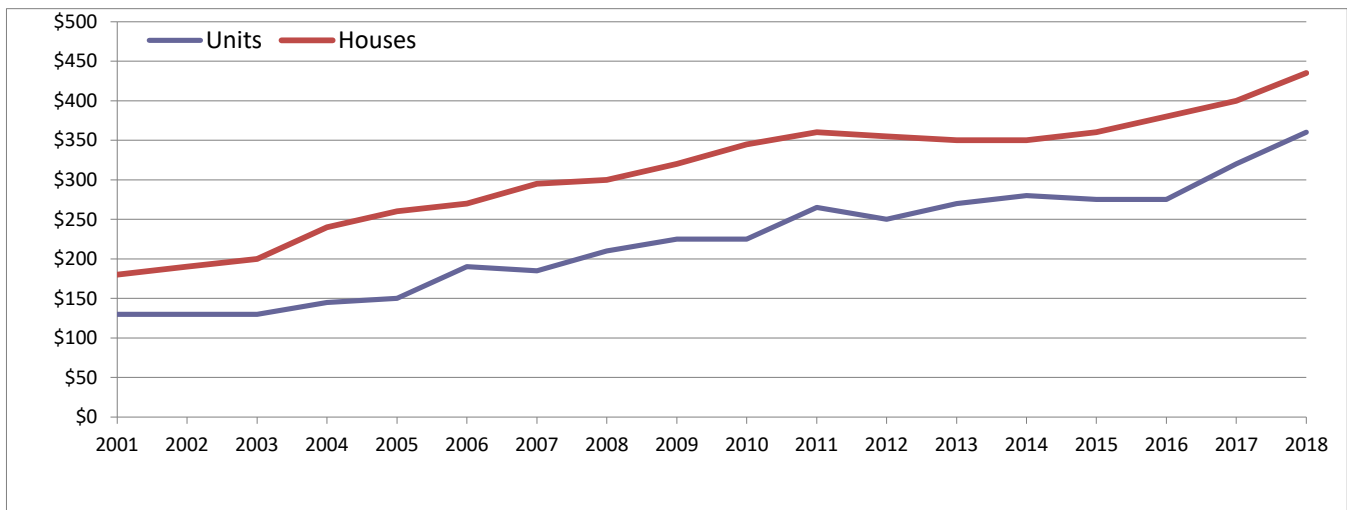
	Units	Houses	% Change (\$)	Units	Houses
Rentals	43	74	last year:	12.5%	8.8%
Median:	\$360	\$435	2 years prior:	30.9%	14.5%
			5 years prior:	33.3%	24.3%
			10 years prior:	71.4%	45.0%

Year	Units			Houses	
	Rentals	Median Rent		Rentals	Median Rent
2001	47	\$130		45	\$180
2002	43	\$130		62	\$190
2003	35	\$130		53	\$200
2004	45	\$145		51	\$240
2004	37	\$150		52	\$260
2006	24	\$190		29	\$270
2007	35	\$185		51	\$295
2008	24	\$210		26	\$300
2009	22	\$225		20	\$320
2010	18	\$225		18	\$345
2011	26	\$265		24	\$360
2012	12	\$250		40	\$355
2013	41	\$270		53	\$350
2014	74	\$280		113	\$350
2015	83	\$275		143	\$360
2016	59	\$275		118	\$380
2017	73	\$320		128	\$400
2018	43	\$360		74	\$435

Note: 2018 includes 01/01/18 to 31/08/18

HOWRAH

Rental Movement



While REIT has full confidence in its figures, no warranty, no guarantee, or holding out, either expressed or implied is given and persons or companies who pursue financial investment or otherwise who act on the basis of this data do so at their own risk.

REIT Statistics - Rentals

HOWRAH



Statistical Information - 2018

	Units	Houses	% Change (\$)	Units	Houses
			last year:	10.9%	8.9%
2 bed	\$355	\$430	2 years prior:	26.8%	16.2%
3 bed	\$400	\$495	5 years prior:	31.5%	22.9%
			10 years prior:	61.4%	48.3%

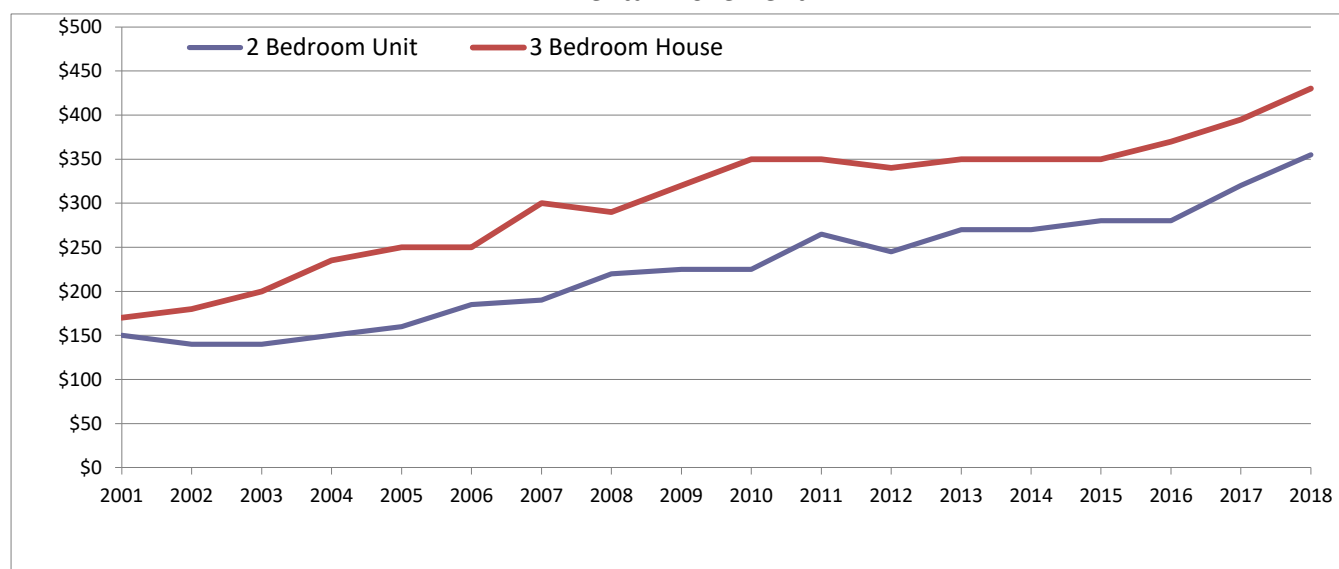
Year	Units		
	1 Bed	2 Bed	3 Bed
2001	\$90	\$150	\$170
2002	\$90	\$140	\$240
2003	\$110	\$140	\$190
2004	\$110	\$150	\$230
2004	\$115	\$160	\$295
2006	\$130	\$185	\$350
2007	\$165	\$190	NA
2008	\$135	\$220	\$300
2009	\$135	\$225	\$350
2010	\$125	\$225	\$320
2011	\$145	\$265	\$300
2012	\$185	\$245	\$325
2013	\$165	\$270	\$290
2014	\$180	\$270	\$330
2015	\$185	\$280	\$340
2016	\$195	\$280	\$340
2017	\$230	\$320	\$395
2018	\$270	\$355	\$400

Houses		
2 Bed	3 Bed	4 Bed
\$165	\$170	\$205
\$175	\$180	\$245
\$210	\$200	\$280
\$220	\$235	\$300
\$220	\$250	\$300
\$270	\$250	\$350
\$265	\$300	\$320
\$245	\$290	\$345
\$180	\$320	\$395
\$220	\$350	\$395
\$265	\$350	\$430
NA	\$340	\$415
\$300	\$350	\$400
\$300	\$350	\$420
\$310	\$350	\$400
\$340	\$370	\$415
\$345	\$395	\$450
\$380	\$430	\$495

Note: 2018 includes 01/01/18 to 31/08/18

HOWRAH

Rental Movement



While REIT has full confidence in its figures, no warranty, no guarantee, or holding out, either expressed or implied is given and persons or companies who pursue financial investment or otherwise who act on the basis of this data do so at their own risk.

Prepared by Research 5/10/2018