

REIT Statistics - Rentals

GEILSTON BAY



Statistical Information - 2018

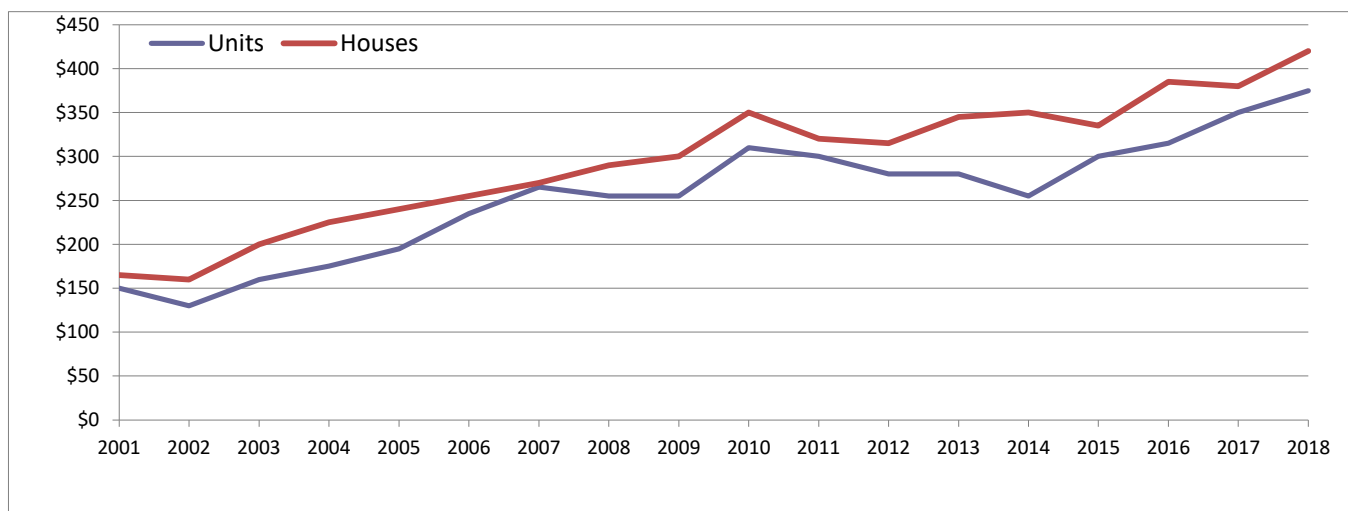
	Units	Houses	% Change (\$)	Units	Houses
Rentals	5	22	last year:	7.1%	10.5%
Median:	\$375	\$420	2 years prior:	19.0%	9.1%
			5 years prior:	33.9%	21.7%
			10 years prior:	47.1%	44.8%

Year	Units			Houses	
	Rentals	Median Rent		Rentals	Median Rent
2001	13	\$150		14	\$165
2002	5	\$130		15	\$160
2003	2	\$160		11	\$200
2004	4	\$175		15	\$225
2004	4	\$195		20	\$240
2006	5	\$235		8	\$255
2007	1	\$265		5	\$270
2008	5	\$255		16	\$290
2009	3	\$255		10	\$300
2010	3	\$310		7	\$350
2011	6	\$300		11	\$320
2012	9	\$280		13	\$315
2013	9	\$280		17	\$345
2014	23	\$255		37	\$350
2015	14	\$300		36	\$335
2016	16	\$315		27	\$385
2017	16	\$350		28	\$380
2018	5	\$375		22	\$420

Note: 2018 includes 01/01/18 to 31/08/18

GEILSTON BAY

Rental Movement



While REIT has full confidence in its figures, no warranty, no guarantee, or holding out, either expressed or implied is given and persons or companies who pursue financial investment or otherwise who act on the basis of this data do so at their own risk.

REIT Statistics - Rentals

GEILSTON BAY



Statistical Information - 2018

	Units	Houses	% Change (\$)	Units	Houses
			last year:	1.5%	10.5%
2 bed	\$340	\$420	2 years prior:	15.3%	10.5%
3 bed	\$465	\$485	5 years prior:	25.9%	33.3%
			10 years prior:	38.8%	44.8%

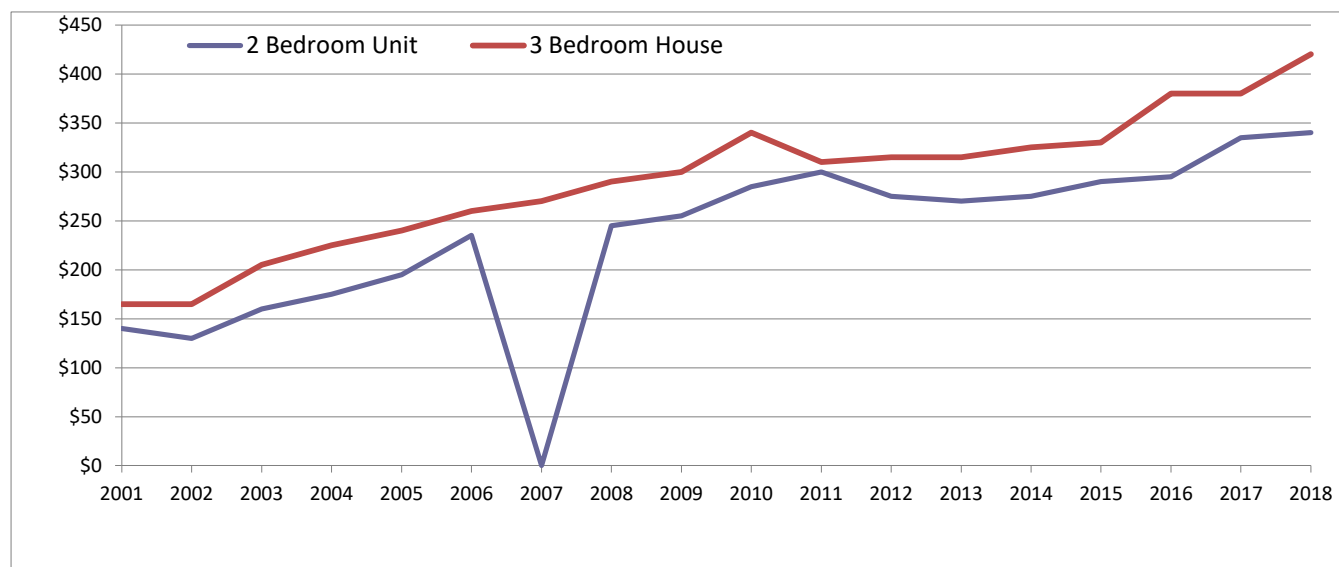
Year	Units		
	1 Bed	2 Bed	3 Bed
2001	NA	\$140	\$160
2002	NA	\$130	\$175
2003	NA	\$160	\$160
2004	NA	\$175	NA
2004	\$150	\$195	NA
2006	\$160	\$235	\$260
2007	NA	NA	\$265
2008	NA	\$245	\$340
2009	NA	\$255	\$430
2010	NA	\$285	\$430
2011	NA	\$300	NA
2012	NA	\$275	\$350
2013	NA	\$270	\$290
2014	\$185	\$275	\$355
2015	\$195	\$290	\$370
2016	NA	\$295	\$305
2017	NA	\$335	\$350
2018	\$240	\$340	\$465

Houses		
2 Bed	3 Bed	4 Bed
\$150	\$165	\$210
\$160	\$165	NA
\$180	\$205	\$200
\$200	\$225	\$270
\$220	\$240	\$280
\$225	\$260	NA
NA	\$270	NA
\$265	\$290	\$340
NA	\$300	NA
NA	\$340	\$480
NA	\$310	\$360
\$295	\$315	\$445
NA	\$315	\$390
\$295	\$325	\$400
\$310	\$330	\$440
\$340	\$380	\$425
\$300	\$380	\$450
\$350	\$420	\$485

Note: 2018 includes 01/01/18 to 31/08/18

GEILSTON BAY

Rental Movement



While REIT has full confidence in its figures, no warranty, no guarantee, or holding out, either expressed or implied is given and persons or companies who pursue financial investment or otherwise who act on the basis of this data do so at their own risk.

Prepared by Research 5/10/2018