

REIT Statistics - Rentals

BELLERIVE



Statistical Information - 2018

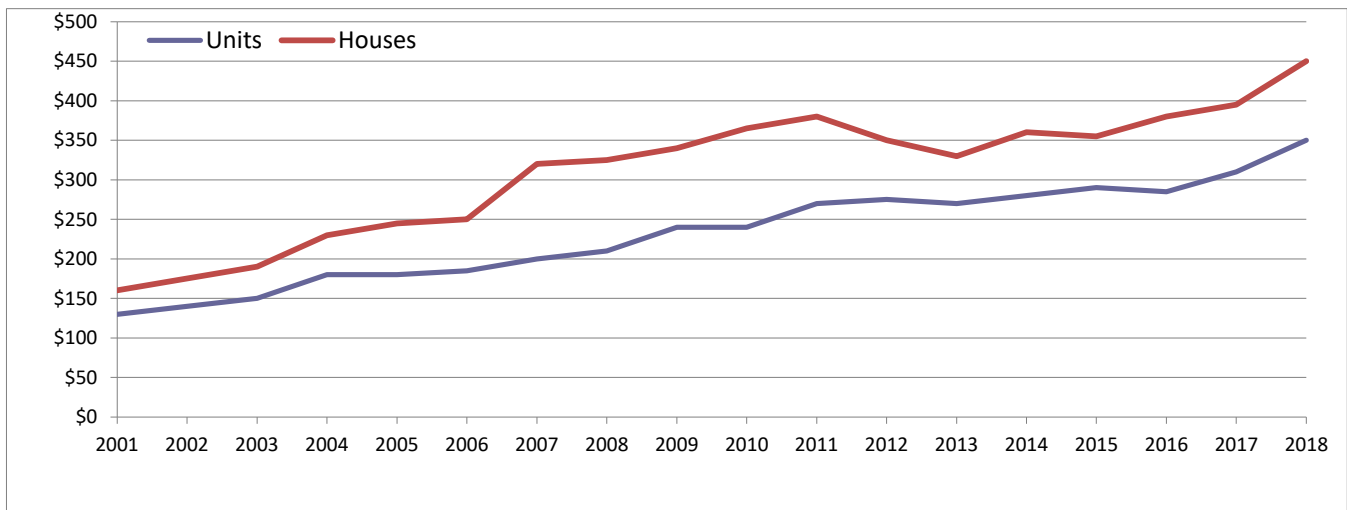
	Units	Houses	% Change (\$)	Units	Houses
Rentals	54	43	last year:	12.9%	13.9%
Median:	\$350	\$450	2 years prior:	22.8%	18.4%
			5 years prior:	29.6%	36.4%
			10 years prior:	66.7%	38.5%

Year	Units			Houses	
	Rentals	Median Rent		Rentals	Median Rent
2001	71	\$130		31	\$160
2002	77	\$140		46	\$175
2003	55	\$150		29	\$190
2004	60	\$180		43	\$230
2004	55	\$180		41	\$245
2006	60	\$185		36	\$250
2007	59	\$200		50	\$320
2008	33	\$210		22	\$325
2009	28	\$240		20	\$340
2010	20	\$240		27	\$365
2011	20	\$270		19	\$380
2012	36	\$275		28	\$350
2013	40	\$270		41	\$330
2014	100	\$280		62	\$360
2015	108	\$290		66	\$355
2016	111	\$285		64	\$380
2017	85	\$310		54	\$395
2018	54	\$350		43	\$450

Note: 2018 includes 01/01/18 to 31/08/18

BELLERIVE

Rental Movement



While REIT has full confidence in its figures, no warranty, no guarantee, or holding out, either expressed or implied is given and persons or companies who pursue financial investment or otherwise who act on the basis of this data do so at their own risk.

Prepared by Research 5/10/2018

REIT Statistics - Rentals

BELLERIVE



Statistical Information - 2018

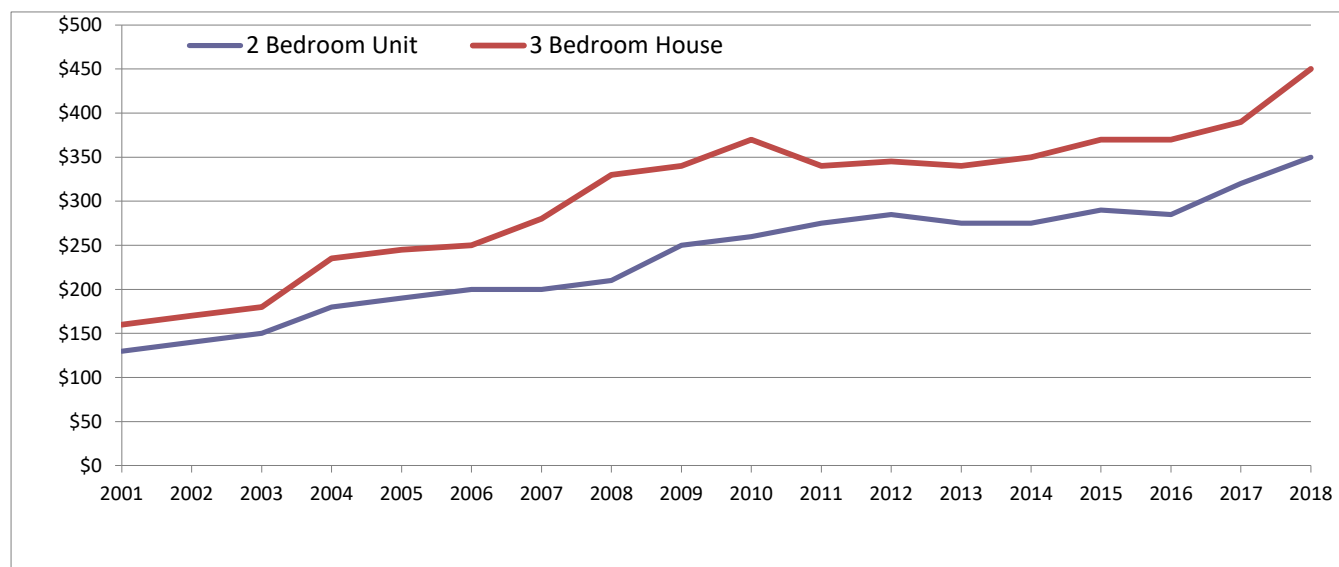
	Units	Houses	% Change (\$)	Units	Houses
			last year:	9.4%	15.4%
2 bed	\$350	\$450	2 years prior:	22.8%	21.6%
3 bed	\$450	\$600	5 years prior:	27.3%	32.4%
			10 years prior:	66.7%	36.4%

Year	Units		
	1 Bed	2 Bed	3 Bed
2001	\$95	\$130	\$130
2002	\$105	\$140	\$160
2003	\$105	\$150	\$165
2004	\$135	\$180	\$275
2004	\$155	\$190	\$240
2006	\$160	\$200	\$320
2007	\$175	\$200	\$310
2008	\$170	\$210	\$310
2009	\$185	\$250	\$250
2010	\$185	\$260	\$295
2011	\$195	\$275	\$270
2012	\$200	\$285	\$380
2013	\$185	\$275	\$335
2014	\$220	\$275	\$310
2015	\$210	\$290	\$340
2016	\$230	\$285	\$380
2017	\$250	\$320	\$440
2018	\$250	\$350	\$450

Houses		
2 Bed	3 Bed	4 Bed
\$135	\$160	\$235
\$160	\$170	\$240
\$155	\$180	\$255
\$190	\$235	\$260
\$220	\$245	\$300
\$230	\$250	\$355
\$260	\$280	\$425
\$285	\$330	\$355
\$295	\$340	\$375
\$340	\$370	\$420
\$380	\$340	\$420
\$330	\$345	\$390
\$280	\$340	\$360
\$320	\$350	\$420
\$290	\$370	\$435
\$340	\$370	\$450
\$345	\$390	\$480
\$400	\$450	\$600

Note: 2018 includes 01/01/18 to 31/08/18

BELLERIVE Rental Movement



While REIT has full confidence in its figures, no warranty, no guarantee, or holding out, either expressed or implied is given and persons or companies who pursue financial investment or otherwise who act on the basis of this data do so at their own risk.

Prepared by Research 5/10/2018